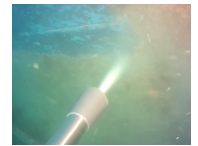


Diesel PRO High Pressure Unit

70 LPM @ 280 bar

The diesel engine driven HDMD280_70 high pressure unit is built on a skid with stainless steel pump head for professional offshore cavitation cleaning. The 70 LPM water volume at 280 bar provides both cleaning speed and cleaning power for fast removal of thick marine growth, corrosion and instable coatings. The HDMD280_70 is compatible with double CW350's, CW450, all ROV cavitation lances, double rotor cleaners and double underwater tools.



Specifications

Compatible with: Triple CW300's,
Double CW350's, CW450, CW202ROV,
CW303ROV, Double rotor cleaners,
Double Underwater Tools

Max. Pressure: 280 bar (4,061 psi)

Max. flow: 70 LPM (18.5 GPM)

Power: 51HP Hatz diesel engine

Weight: 850kg (1,875 lbs)

Dimensions: 195x125x150cm
(76.8x49.2x59")

Features

- Removes hard fouling, debris, corrosion and coatings
- Drives multiple underwater tools
- Electric start
- Stainless steel pump head
- Heavy duty skid
- Manual pressure valve
- Motor thermal protection
- Hour counter
- Emergency stop
- Big cartridge filter at pump inlet